

WILLIAM MEWS KNIGHTSBRIDGE SW1X

Situated in the heart of Knightsbridge, this is a well presented three double bedroom freehold house with off street parking.

Accessed via a private patio, the ground floor offers light and bright reception space leading through to a well appointed, fully fitted kitchen. There is a central entrance hall, guest cloakroom and integral garage. On the first floor, there is a good master bedroom suite with sliding doors leading out onto a lovely balcony. There are two further bedrooms, a family bathroom and a separate cloakroom.

Located just off Lowndes Square and moments from Hyde Park, the highly prized address of William Mews is accessed via a security barrier and private road.

3 BEDROOMS • 2 BATHROOMS • 2 GUEST CLOAKROOMS • RECEPTION ROOM/DINING ROOM
KITCHEN • GARAGE • GARDEN • BALCONY • EPC RATING D

TERMS

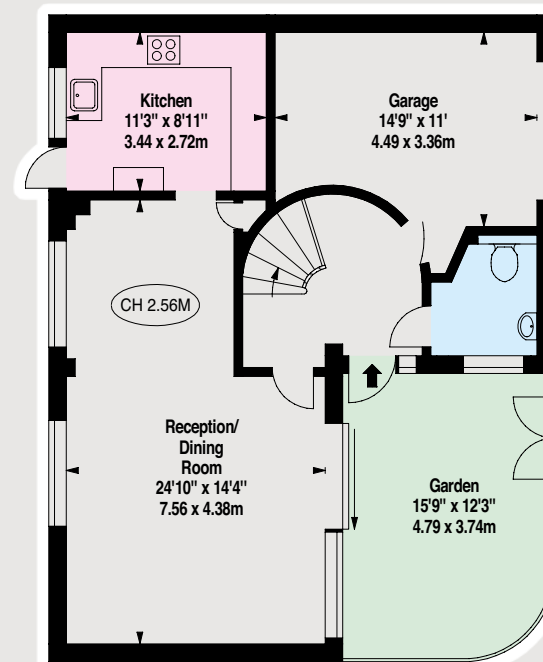
Price: £2,100,000 subject to contract

Tenure: Freehold

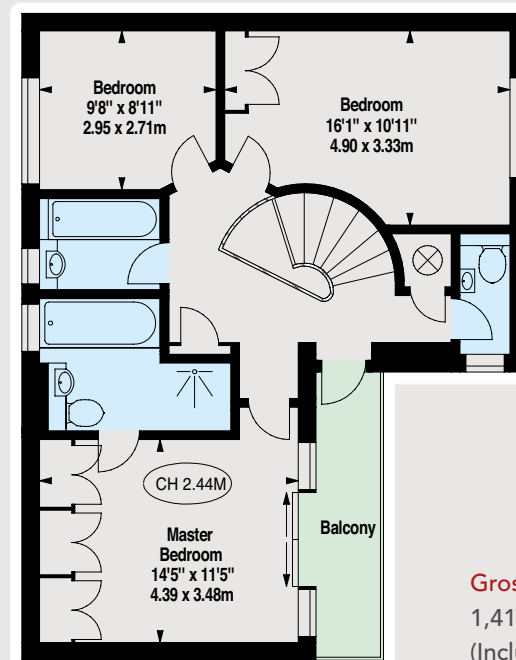
Local Authority: London Borough of Westminster



Key : CH - Ceiling Height



GROUND FLOOR



FIRST FLOOR

Gross Floor Area
1,412 sq ft / 131.17 sq m
(Including Garage)

MASKELLS



71 WALTON STREET, LONDON, SW3 2HT
+44 (0)207 581 2216
www.maskells.co.uk sales@maskells.co.uk

